



IDAHO'S

# HERITAGE CONFERENCE

Building our Story, Expanding our Reach

SEPTEMBER 20-22, 2017  
BOISE, IDAHO  
[WWW.IDAHOHERITAGECONFERENCE.ORG](http://WWW.IDAHOHERITAGECONFERENCE.ORG)



C.L. "BUTCH" OTTER  
GOVERNOR

## Welcome to Idaho's Heritage Conference 2017

As Governor of Idaho it is my pleasure to welcome you to our beautiful capital city of Boise. On behalf of all Idahoans I am excited to have you here and want to thank each of you for the critical role you play in preserving and protecting Idaho's history and culture.

Idaho is home to a wealth of heritage sites – from northern Idaho's Boundary County Historical Museum in Bonners Ferry to central Idaho's Sacajawea Center in Salmon, and from the immaculately restored Mormon tabernacle in the southeastern Idaho town of Paris to one of the West's best-preserved 19<sup>th</sup> century mining communities in Silver City.

Such places have been saved, preserved and interpreted because Idaho has long been fortunate to have people like you, who recognize the importance of our heritage.

Such agencies and organizations as the Idaho Heritage Trust, Idaho State Historical Society, Preservation Idaho, Idaho Association of Museums, Idaho Archaeological Society and National Trust for Historic Preservation – working collaboratively with grassroots preservationists in every community – undertake work vital to our understanding of who we are as Idahoans. When we respect the past we have the opportunity to reflect upon it, to learn from it. That in turn enables us to better prepare for the future.

The Heritage Conference will provide opportunities for professional development, information sharing and networking. I applaud your efforts and encourage your continued work on behalf of the people of Idaho. Enjoy your time here in Boise!

As Always – Idaho, "Esto Perpetua"

A handwritten signature in cursive script that reads "C.L. Butch Otter".

C.L. "Butch" Otter  
Governor of Idaho



## OFFICE OF THE MAYOR

MAYOR: David H. Bieter

September 20, 2017

Dear Friends,

On behalf of the people of the "City of Trees", I am proud to welcome the participants in Idaho's Heritage Conference 2017 to Boise.

Boise is an innovative and vibrant city. Nestled against the picturesque Boise Foothills, Idaho's capital offers a unique combination of economic vitality and unmatched quality of life. From the start, Boise's people have come together as a community to advance and enhance the city in every way. We have diverse and welcoming neighborhoods, a 26-mile riverfront greenbelt extending from the heart of downtown, and a lively cultural scene. Our relative remoteness means Boiseans have relied on their own ingenuity and determination to build a place that strangers want to visit – and visitors want to stay.

Boise's success is the product of good planning, strong leadership, a healthy business environment, and lots of hard work at every level. It's also the result of countless decisions – large and small, individual and collective – to invest in this city, its infrastructure, and especially its people.

As mayor, my main goal is to make Boise the most livable city in the country. Boise treasures our past while looking to our future. Idaho's Heritage Conference 2017 is a testament to the importance of preservation, education, and interpretation to our understanding of ourselves and our appreciation for this special place.

Thanks to all of you who have committed your lives to this crucial work, and best wishes for a productive conference and an enjoyable visit in Boise.

Sincerely,

A handwritten signature in blue ink that reads "David Bieter".

David H. Bieter  
Mayor



**Boise** is a thriving city in the high desert with a continually evolving economic base and growing population. Native Americans first lived in the Boise valley and developed a unique culture over thousands of years. Despite hardships, their descendants remain here and in the region. People with roots from all over the world have called Boise home, their reasons for coming as varied as their backgrounds. The abundance of some natural resources have attracted industry and scarcity of other has cultivated ingenuity and adaption. Boise is known for its picturesque environment, which has both been neglected and treasured.

### **Boise Valley before 1863**

The Boise River formed a fertile valley nestled between mountains to the north and the Bench lands to the south. This geography created a natural trade corridor for indigenous people where they hunted, gathered plants, and fished for salmon. The Shoshone, Bannock, and Paiutes gathered every year in the valley to trade with other tribes and visit sacred sites for healing.

European and American explorers and missionaries began arriving in the early 1800s. Their presence eventually destroyed the traditional ways of life of the local native people by introducing new disease, overusing natural resources, and inciting violence. After Boise City was founded, soldiers forcibly remove the native people from the area in the spring of 1869 to the reservation at Fort Hall.

### **Founding & Growing a City, 1863-1917**

Boise was a part of the Oregon Trail during the 1840s, but most pioneers stopped temporarily on their way to the coast. Gold fever hit the region in 1862 after discoveries in the Boise Basin. The influx of people prompted the U.S. military to establish Fort Boise on July 4, 1863.



On July 7, 1863, Colonel Pinckney Lugenbeel, of Fort Boise, his officers, and eight homesteaders gathered to plat a ten-block townsite on the north side of the river, which marked the beginning of Boise City. By 1867 the town consisted of 140 blocks; population almost tripled between 1900 and 1910. Settlers took advantage of the opportunity offered from the development of an irrigation system.

Throughout the early part of the twentieth century Boise benefited from private and federal investments, and continued to grow through efforts from civic organizations, benevolent societies (Masons, I.O.O.F, Shriners, etc.). During this era, orchestra and theater groups flourished.

### **WWI to WWII, 1918-1945**

Boiseans engaged in bond drives and other support programs on the home-front during World War I. The war ended in 1918 and Boise residents suffered from the worldwide flu epidemic that same year. Farm profits collapsed and Boise's population growth slowed down. After a brief economic boom in the 1920s the Great Depression of 1929 resulted in the closing of banks and industries.

Federal projects from the Roosevelt Administration's New Deal were essential for Boise and Idaho. The face of the city changed due to many construction projects, including the construction of the Oregon Trail Memorial Bridge on Capitol Boulevard, the Old Ada County Courthouse,



the Armory, Boise Jr. College (now BSU), the Boise Art Museum, the State Historical Museum, and sidewalks, roads, and canals.

During WWII, Boiseans participated in war rationing and war-bond drives. Gowen Field Air Force Base boomed during the war, and Boise's community welcomed the itinerant soldiers like they once had done with Fort Boise servicemen.

### **Post War, 1945-1980**

After World War II, Boise's economy strengthened as new local corporations formed and other expanded, including Ore-Ida, Boise Cascade, Morrison-Knudsen, Simplot, Trus Joist, and Albertsons. New concerns arose during the postwar economic expansion. Boise suburban development consumed agricultural lands and drained resources from Boise's downtown core. Decades of using the river as a waste disposal system turned it into a major health hazard. Property owners and the redevelopment agency tore down historic buildings in downtown, including Boise's Chinatown. In reaction to the demolition, concerned citizens found ways to save Old Boise and the Egyptian Theater. Boise's boundaries expanded in the 1960s and 1970s because a new charter allowed for annexation of suburbs, which doubled the population. Boise Junior College expanded and became Boise State University. Federal programs invested in Boise's interstate highway construction, modernization of the airport, a Veterans Hospital, and improvements in Boise's schools, parks, and housing.

### **The Most Livable City in the Country, 1980 to Present**

Following an economic slump in the early 1980s, Boise grew in population, economic opportunities, and community amenities. Hewlett-Packard and

Micron Technology expanded throughout the 1990s, which resulted in the Boise area offering world-wide leadership in technological advancements. Increased appreciation of the natural environment led to community efforts to preserve the Boise Foothills, to increase parks and open space within the city, and to better care for the Boise River and surrounding desert. Recreational enthusiasts and others began to call Boise home. New residents also sought cultural opportunities. Boise's creative energy and artistic entrepreneurship helped the city blossom in the late twentieth century into the modern complex city that it is today.

### **Quick Facts**

- People used the Boise River to dispose of garbage, sewage, detergents, and processing plant waste.
- Boise was organized as a city seventeen years before Idaho became a state.
- The first public school in Boise opened in 1865.
- The Oregon Short Line came to Boise in 1887.
- Before construction of the Connector, railroad tracks ran along Myrtle and Front Streets.
- Idaho's first capital city was Lewiston, a busy mining town in the north. In 1864 the seat moved to Boise after a heated debate and, some say, nefarious plots.
- The original Fort Boise was constructed as a Hudson's Bay Company fur trading post on the shores of the Boise River near Parma in 1834.
- Boise's first subdivision, Arnold's Addition, was platted in 1878.
- Kelly Hot Springs, east of Tablerock, was a Shoshone winter camp and gathering place.

# CONFERENCE LEADERSHIP

## Heritage Partners



The **Idaho State Historical Society** is a state agency providing essential services to Idahoans through education, stewardship of cultural resources and objects, historic preservation, and records management. We seek to inspire, enrich and engage all Idahoans by leading the state in preserving, sharing, and using history and cultural resources relevant to today to inform and influence the future. Created as a state agency 102 years ago, the Society has strategically deployed its historic resources to benefit Idahoans through public programs in education, preservation, and technical assistance. Janet Gallimore, Executive Director



The **Idaho Heritage Trust** is a non-profit organization preserving the historic fabric of Idaho for our State's Bicentennial in 2090 through a program of statewide grants and technical assistance to more than 400 projects in every county in Idaho. Founded in 1989, the Idaho Heritage Trust began as a lasting legacy of the Centennial Celebration of 1990 and has funded over \$3 million in grants to 274 organizations and provided grants and/or technical assistance to more than 400 projects in every county in Idaho. Katherine Kirk, Executive Director



**Preservation Idaho** is a member funded non-profit organization founded in 1972 and dedicated to preserving Idaho's historic places through collaboration, education, and advocacy. Established in 1972 by a group of Idahoans concerned with the alarming rate at



which historic sites and resources in Idaho were being lost, these individuals created an organization that enabled members of the public to unite toward preservation of Idaho's historic built environment. Paula Benson, Board President



The **National Trust for Historic Preservation**, a privately funded non-profit organization, works to save American's historic places. With more than 200,000 members and supporters around the country, the National Trust protects significant historic sites and advocates historic preservation as a fundamental value in programs and policies at all levels of government. In addition to the headquarters in Washington, D.C., the National Trust operates twenty-nine historic sites open to the public and numerous field offices, including the Boise Field Office. Sheri Freemuth, Senior Field Officer



The **Idaho Archaeological Society** is a non-profit organization founded in 1971 that strives to preserve, educate about, and encourage the study of Idaho's antiquities. Marc Munch, President



The **Idaho Association of Museums** is a non-profit organization, which provides statewide educational opportunities, advocacy, and promotion to aid the enrichment and advancement of museums as educational centers, agencies of research, cultural centers, and public repositories of cultural, aesthetic, scientific, and historical significance. Dulce Kersting, interim IAM president

As the Idaho's Heritage Conference builds momentum towards a statewide heritage network of partners, the collaboration in planning and organization of the conference has also expanded. Additional partner organizations have joined in the collaboration and planning of this year's Idaho's Heritage Conference.



**Thank you to our sponsors for making this conference a possibility!  
We couldn't have done it without you.**

***Preservation Sponsors: Gifts of \$500 or more***



*Rediscovered  
Books*



Idaho Heritage Trust

North Wind Resource Consulting

Boise State University History Department

SWCA Environmental Consultants

North Wind Resource Consulting

Framework Meetings & Destinations

Trout Architects

Rediscovered Books

**Conservation Sponsors: Gifts of \$250-\$499**



Preservation Idaho

Idaho Association of Museums

Idaho Archaeological Society

TAG Historical Research

Idaho Parks and Recreation

Idaho Bureau of Land Management

Strategies 360

**Foundation Sponsors: Gifts of \$100-\$249**



RDesign

# GENERAL INFORMATION

**Location of events:**

The classroom sessions and plenaries are being held in the west wing of the Idaho Statehouse. Meeting room names are designated within each session and plenary description. The evening events will be held in downtown Boise. Addresses are designated within the event description.

**Registration:**

General admission is \$85 per person. Currently enrolled full-time student admission is \$35 per person. A valid student ID is required at pick up. Pick up Conference Passes and Registration Packet Wednesday, Sept. 20, 2017 from 4-6:30 p.m. at the Red Lion Downtowner and Thursday, Sept. 21, 2017 from 8-9 a.m. at the Idaho History Center.

**Security:**

Name badges are required for entrance to all events. Pre-registration in addition to conference name badges are required for the Field Sessions.

**Parking:**

On Thursday, September 21st, parking is available for Registration/Networking/Book Sales at the Idaho History Center (park here for this first portion of the morning, and then proceed to parking behind the Bishop's House at 2420 Old Penitentiary Road for the remainder of the day). Follow directional parking signs. On Friday, September 22nd, parking near the Idaho Statehouse is limited to 1 and 2 hour metered parking. It is recommended that you park in one of the parking garages or walk from your hotel. The parking garages offer day rates. The garages located closest to the Capitol are the Eastman Garage, 848 W. Main Street, and the Capitol Terrace Garage, 805 W. Idaho Street.

**Mobility Assistance:**

If you have limited mobility and require shuttle service, please make arrangements with Dax Chizum ([Dax.Chizum@ishs.idaho.gov](mailto:Dax.Chizum@ishs.idaho.gov)) or Katherine Kirk ([katherine@idahoheritage.org](mailto:katherine@idahoheritage.org)) for a pre-scheduled ride to/from a location.



# DAILY SCHEDULE

## **Field Sessions:**

The field sessions are an opportunity to travel to historic sites in the area and learn about a variety of different subjects. Some of the field sessions will include bus transportation. Once arriving at the designated sites, short walks will be required. Field sessions will depart from the Old Penitentiary. Line-up, departure, and return times are shown within each description. Please be on time. Field sessions require pre-registration and a conference name badge, so be sure to sign up for a field session when you register. Box Lunches will be provided to all field session participants.

## **Sponsor Exhibits:**

Visit Sponsors' Exhibits during the Opening Reception on Thursday, September 21st, at the Esther Simplot Performing Arts Academy.

## **Poster Sessions:**

The Heritage Conference is looking to showcase up-and-coming and tenure career professionals in Archaeology, Museums, and Preservation and is requesting submission for the 2017 Poster Session. The Poster Session is an opportunity to obtain new insights, share projects, as well as network with colleagues from multiple disciplines in an informal setting. The goal of the Heritage Conference Poster Session is to showcase work from across the state!

## **Book Fair:**

Rediscovered Books will be selling recently published books about Idaho or by Idahoans at during registration at the Idaho History Center on Thursday September 21<sup>st</sup> from 8-9 a.m.

## **Evaluations:**

At the end of the conference, you will be emailed an electronic survey about the conference. Completing it is an important way to share your feedback for future conference events.

### Wednesday, September 20, 2017

<b>Session Name</b>	<b>Time</b>	<b>Location</b>
IAM Board Meeting	8:30 a.m. - 5:00 p.m.	Boise Public Library
Early Registration Pick Up	4:00 p.m. - 6:30 p.m.	Red Lion Downtowner

### Thursday, September 21, 2017

<b>Session Name</b>	<b>Time</b>	<b>Location</b>
Registration, Networking And Book Sales	8:00 a.m. - 11:30 a.m.	The History Center Lobby
Archaeology Workshop: Site Stewardship	8:30 a.m. - 11:30 a.m.	1893-1894 Administration Building - Old Penitentiary Site
Museum Workshop: Preservation Before Access Digitizing Archives	8:30 a.m. - 11:30 a.m.	The History Center - Multipurpose Room
Museum Workshop: Caring For Your Collections	8:30 a.m. - 11:30 a.m.	The History Center - Archives
Preservation Workshop: Conserving the Eye of God: Stained Glass Windows And Their Preservation	8:30 a.m. - 11:30 a.m.	Shirt Factory - Old Penitentiary Site

Preservation Workshop: May Your Cemeteries Rest In Peace, Part II	8:30 a.m. - 11:30 a.m.	Old Penitentiary Site Courtyard between New Cell House and North Wing
Preservation Workshop: Researching Historic Properties	8:30 a.m. - 11:30 a.m.	The History Center - Reading Room
Preservation Workshop: Understanding Your Historic Building	8:30 a.m. - 11:30 a.m.	Bishops' House- Across the street from the Old Penitentiary Site
Boxed Lunches For Field Trips	11:30 a.m. - 12:00 p.m.	Bishops' House- Across the street from the Old Penitentiary Site
Public Archaeology, Cultural Sites and Community Impact Tour	12:00 p.m. - 4:30 p.m.	Leaving from Botanical Garden Parking Lot
Boise Cultural Corridor Tour	12:00 p.m. - 4:30 p.m.	Leaving from Botanical Garden Parking Lot
Houses of Worship: Experiencing Stained Glass Windows In Both Historic And Modern Settings Tour	12:00 p.m. - 4:30 p.m.	Leaving from Botanical Garden Parking Lot
Nampa Main Street Tour	12:00 p.m. - 4:30 p.m.	Leaving from Botanical Garden Parking Lot
Evening Reception With Appetizers	5:30 p.m. - 7:30 p.m.	Esther Simplot Performing Arts Academy

## Friday, September 22, 2017

<b>Session Name</b>	<b>Time</b>	<b>Location</b>
Poster Sessions And Coffee	7:30 a.m. - 9:00 a.m.	Dining Room - Idaho Statehouse
Archaeology Session: Archeology Stewardship	9:00 a.m. - 10:15 a.m.	WW02/Lincoln Auditorium - Idaho Statehouse
Museum Session: Reinventing Our Exhibits	9:00 a.m. - 10:15 a.m.	WW53 - Idaho Statehouse
Preservation Session: Tools For Rehabilitation	9:00 a.m. - 10:15 a.m.	WW54 - Idaho Statehouse
CLG/Main Street Session: The Importance of Survey and Inventory	9:00 a.m. - 10:15 a.m.	WW55 - Idaho Statehouse
Break Service	10:15 a.m. - 10:30 a.m.	Dining Room - Idaho Statehouse
History Session: The CCC in Idaho	10:30 a.m. - 11:45 a.m.	WW02/Lincoln Auditorium - Idaho Statehouse
Museum Session: Backlog of Museum Collections	10:30 a.m. - 11:45 a.m.	WW53 - Idaho Statehouse
Preservation Session: Making A Statement - The Benefits of a State Historic Tax Credit Program	10:30 a.m. - 11:45 a.m.	WW54 - Idaho Statehouse
CLG/Main Street Session: Best Practices for Main Street	10:30 a.m. - 11:45 a.m.	WW55 - Idaho Statehouse

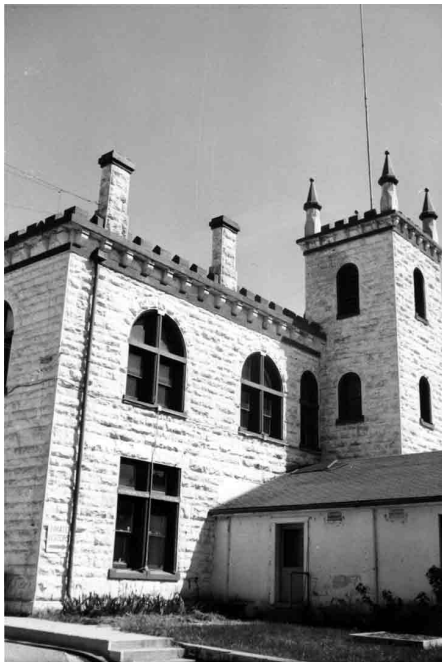


<b>Session Name</b>	<b>Time</b>	<b>Location</b>
Lunch Plenary	12:00 p.m. - 1:30 p.m.	Crystal Ballroom
Museum Session: Ask A Curator	1:45 p.m. - 3:00 p.m.	WW53 - Idaho Statehouse
Preservation Session: Crafting an Effective Historic Preservation Plan	1:45 p.m. - 3:00 p.m.	WW54 - Idaho Statehouse
CLG/Main Street Session: Mining Your Assets	1:45 p.m. - 3:00 p.m.	WW55 - Idaho Statehouse
Break: No Services	3:00 p.m. - 3:15 p.m.	General Area
Closing Plenary: Fundraising	3:15 p.m. - 4:30 p.m.	Lincoln Auditorium-Idaho Statehouse

**Saturday, September 23, 2017**

<b>Session Name</b>	<b>Time</b>	<b>Location</b>
IAS Papers & Board Meeting	9:00 a.m. - 5:00 p.m.	Lincoln Auditorium-Idaho Statehouse
CLG/Main Street Session: Training for Certified Local Governments	9:00 a.m. - 12:00 p.m.	The History Center - Board Room
Preservation WalkAbout Tour	10:00 a.m. - 11:30 a.m.	Grove Street, Downtown
Historic Sites Review Board	1:00 p.m. - 5:00 p.m.	The History Center - Board Room

# SCHEDULE



## WEDNESDAY, SEPTEMBER 20, 2017

8:00 a.m. – 9:30 a.m.

### **IAM (Idaho Association of Museums) Business Meeting and Election for Directors and Officers**

Basque Museum & Cultural Center

10:15 a.m. – 5:00 p.m.

### **Small Museum GPS: Finding a Path Forward** Boise Public Library (requires separate registration)

Learn how to look at your museum's health and vitality on multiple levels, guided by experts in the field. Appropriate for staff, volunteers and board members, this workshop will offer ideas for advancing our museum's mission into the

future without sacrificing present day success. Separate registration for this workshop is required, see

<https://www.idahomuseums.org/iam-workshops> for more information.

#### Speakers:

- Ruth Ann Rugg, Former Director, Texas Association of Museums
- Brian Crockett, Independent Museum Consultant

4:00 – 6:30 p.m.

### **Registration Packet Pick Up**

Hotel Lobby, Red Lion Hotel Boise Downtowner, 1800 W Fairview Avenue

Stop in and pick up your registration materials early so you are ready to go in the morning.

## THURSDAY, SEPTEMBER 21, 2017

8:00 – 11:30 a.m.

### **Registration Packet Pick Up**

The History Center Lobby, 2205 Old Penitentiary Road, Boise  
Pick up Registration Packets

8:00 – 11:30 a.m.

### **Networking and Book Sales**

The History Center Lobby, 2205 Old Penitentiary Road, Boise  
Come early and enjoy a chance to network with conference attendees over coffee and a pastry while you peruse a hand-picked selection of Idaho history and culture focused books from beloved Boise bookstore, The Rediscovered Bookshop.

8:30 – 11:30 a.m.

### **Archaeology Workshop: Site Stewardship**

1893-1894 Administration Building -Old Penitentiary Site,  
2445 Old Penitentiary Road

This workshop will focus on what the role of a site steward is in historic preservation. This will be a hands-on workshop covering site monitoring, recording and reporting.

**Speaker:** Kirk Halford, Deputy Preservation Officer & State Archaeologist, Idaho BLM (Boise)

8:30 – 11:30 a.m.

### **Museum Workshop: Preservation Before Access - Digitizing Archives**

The History Center, Multipurpose 2205 Old Penitentiary Road, Boise  
A two-part overview of archival processing and digitization workflows. Idaho State Archives' Layce Johnson, Processing Archivist, and Jenaleigh Kiebert, Digital Librarian, will walk participants through the stages of processing a collection and creating digital archives. Part One, Processing, will include each step of collection processing from initial assessment to proper archival housing, description and creating a finding aid. Part Two, Digitization, will utilize the information documented in Part One to build a publicly accessible digital collection. Preservation issues for both the physical and digital items will be addressed and resources will be provided to help make your project a success.

#### **Speakers:**

- Layce Johnson, Processing Archivist, State Archives (Boise)
- Jenaleigh Kiebert, Digital Librarian, State Archives (Boise)



8:30 – 11:30 a.m.

### **Museum : Caring for Your Collections**

The History Center, Archives 2205 Old Penitentiary Road

From supplies to resources to budgets, caring for collections can be a daunting task for many institutions. This workshop will cover the basics of collections care – storage techniques and resources on a budget. Examples of materials will be on hand as we explore and learn proper storage techniques. Please bring your collection care

questions.

**Speaker:** Amanda Biemann, Curator of Collections & Exhibitions, Basque Museum & Cultural Center (Boise)

### **Preservation Workshop: Conserving the Eye of God: Stained Glass Windows and their Preservation**

Shirt Factory, Old Penitentiary, 2445 Old Penitentiary Road

Stained glass windows are significant defining features of both historic and modern houses of worship. A stained glass window is more than a void in the fabric in a wall, but a transformative expression of light on the environment ambiance, and experience of a building's character. Stained glass windows are a language of vision whose medium is light. Conserving stained glass windows in historic buildings require an understanding of historic styles, the methods of fabrication, and recognition of conditions for conservation intervention. This session will address a brief history of stained glass, common historic style to 19th and early 20th century windows, an overview of window construction, and a discourse on existing conditions that precipitate various levels of conservation.

#### **Speakers:**

- David Schlicker, David Schlicker Stained Glass Studio, Inc. (Portland)
- Fred Walters, Architectural Preservationist, Idaho Heritage Trust (Cambridge)

8:30 – 11:30 a.m.

### **Preservation Workshop: May Your Cemeteries Rest in Peace, Part II**

Old Penitentiary Site Courtyard between New Cell House and North Wing, 2445 Old Penitentiary Road

Part I of Cemetery Preservation, presented at the Idaho's Heritage Conference in 2013, focused on the process of creating a preservation plan for historic

cemeteries. Part II of Cemetery Preservation will review the importance of a preservation plan as it relates to how to approach the preservation work in the field. Participants will experience a hands-on workshop in the materials and methods of preserving cemetery objects at the Old Penitentiary Cemetery. Demonstrations will include the appropriate methods to clean, repair and stabilize cemetery objects.

**Speakers:**

- Bruce Howard (Hood River)
- Anthony Parry, Interpretative Specialist, Idaho State Historical Society, Old Idaho Penitentiary (Boise)

8:30 – 11:30 a.m.

**Preservation Workshop: Researching Historic Properties**

The History Center, Reading Room 2205 Old Penitentiary Road

This workshop will provide an overview of available sources to research historic properties. Included in the workshop is a handout with tips, lists of sources, where to find them, and how to use them.

**Speaker:** Jamee Fiore, Architectural Historian, ISHS State Historic Preservation Office

8:30 – 11:30 a.m.



**Preservation Workshop: Understanding Your Historic Building**

Bishops' House, 2420 Old Penitentiary Road

Using the Bishops' House and Old Pen as case studies. In Part 1 of the workshop, participants will learn how to identify the character-defining features of their historic property – be it museum, historical society or historic site – in order to understand which elements of their own building are most important to preserve and protect. Part 2 of the workshop will introduce participants to assessing the condition of their building, including areas of concern, things to look out for, when

to call a professional, etc.

**Speaker:** Shannon Sardell, Program Director/Instructor, Pacific Northwest Preservation Field School (Portland)

11:30 – 12:00 p.m.

### **Boxed Lunches for Field Trips**

Bishops' House, 2420 Old Penitentiary Road

Pick up your boxed lunch at the Bishop's house before heading out on your field trip. Eat at the tables provided - if you have time or take it with you on the bus.



### **Field Trip #1: Public Archaeology, Cultural Sites and Community Impact**

Public Archaeology and site stewardship has had a profound impact on the community in the Treasure Valley. Dr. Mark Warner has led Public Archaeology research projects focused on Fort Boise Surgeon's Quarters, and the Erma Hayman House. Join Dr. Warner and learn about selected sites, ending your trip at the James Castle House. Here you will join Rachel Reichert, manager, and Byron W. Folwell, architect and design consultant, as they discuss the City of Boise's massive restoration project to preserve internationally celebrated artist James Castle's home, workspaces and physical legacy. This field trip is designed for participants interested in the interplay between community relations, preservation, and program development, with a discussion focused on peacemaking, accessibility, new technology, collaborations and so much more.

#### **Field Trip Presenters:**

- Dr. Mark Warner, Historical Archaeologist, Professor & Associate Dean for Graduate Studies, University of Idaho (Moscow)
- Renae Campbell (Boise)
- Rachel Reichert, Cultural Sites Manager, Boise City Department of Arts & History (Boise)
- Byron Folwell, Architect and Design Consultant, Studio Maelstrom (Boise)

## **Field Trip #2: Boise's Cultural Corridor Tour**

Julia Davis Park is home to many of Boise's cultural institutions including museums, memorials, sculptures, gardens and the zoo. This Boise's Cultural Corridor Tour will take participants on a behind-the-scenes look at the institutions in Julia Davis Park from a director's perspective. Sites to be visited include the Boise Art Museum, The Cabin, the Black History Museum, the Anne Frank Human Rights Memorial, and the Idaho History Museum. The directors at each location will focus on their institution's relationships with their communities, highlighting partnerships with other organizations and how these connections contribute to and enhance the area.

Participants will be bused to a central location and then will walk to the institutions. Total walking distance for this field trip is approximately .7 miles.

### **Field Trip Presenters:**

- Melanie Fales, Executive Director, Boise Art Museum (Boise)
- Philip Thompson, Director, Idaho Black History Museum (Boise)
- Jody Ochoa, Director, Idaho State Museum (Boise)
- Kurt Zwolfer, Executive Director, The Cabin (Boise)
- Dan Prinzing, Executive Director, Anne Frank Human Rights Memorial (Boise)



## **Field Trip #3: Houses of Worship – Experiencing Stained Glass Windows in both Historic and Modern Settings**

Come along with artisan David Schlicker on a visit to view the stained glass windows at three important historic houses of worship in Boise. Mr. Schlicker restored the windows of Christ Chapel and designed the new windows for St.

Mary's Catholic Church. At St. Michael's Episcopal Cathedral, we will have the rare chance to view an original Louis Comfort Tiffany window, one of only three known in the Northwest.

The historic houses of worship will include a visit to the following:

- Christ Chapel on the campus of Boise State University: These windows are some of the oldest in Idaho, if not the Pacific Northwest.
- St. Michael's Episcopal Cathedral: This sandstone structure was designed by the New York architect Henry M. Cogdon. Constructed in

1902 in the English Gothic style, the Cathedral has a remarkable collection of early 20th century stained glass, including a rare Tiffany window.

- St. Mary's Catholic Church: An addition and new stained glass windows were added to this 1937 Tourtellotte and Hummel design.

**Field Trip Presenters:**

- David Schlicker, David Schlicker Stained Glass Studios (Portland)
- Fred Walters, Architectural Preservationist, Idaho Heritage Trust (Cambridge)
- Eve Chandler, Author, History Writer and President, Christ Chapel Historical Society (Boise)



**Field Trip #4: Nampa Main Street**

This will be a comprehensive tour of Downtown Nampa highlighting some of the best practices of the National Main Street Program and how a Main Street in partnership with a Certified Local Government program can leverage each other's resources into a comprehensive community revitalization strategy. Highlights of the tour will include walkthroughs of the historic Nampa Train Depot, public plazas and gathering places like Lloyd Square Park and Library Square and conversations with Downtown businesses and property owners.

**Field Trip Presenter:**

- Morgan Treasure, Coordinator, Nampa Main Street Program (Nampa)

5:30 – 7:30 p.m.

**Evening Reception with Appetizers**

Esther Simplot Performing Arts Academy,  
516 S 9th Street D

Join us for an early evening welcome in Boise's cultural district with conference attendees, sponsors and friends including Donovan Rypkema, Principal, Place Economics. Conference participants will have a chance to engage in conversation while enjoying music, appetizers and a no-host bar in the historic warehouse district at the lovely Esther Simplot Performing Arts Academy with entertainment provided by Kitchen Syncopation.





FRIDAY, SEPTEMBER 22, 2017

7:30 a.m. – 9:00 a.m.

**Morning Social, Poster Sessions and Coffee**

Idaho Statehouse, Dining Room, 700 W Jefferson Street

Join us for coffee and networking with poster presentations to highlight work from across all of our disciplines.

9:00 a.m. – 10:15 a.m.

**Archaeology Session: Archaeology Stewardship**

Idaho Statehouse, WW02/Lincoln Auditorium, 700 W Jefferson Street

This session will discuss how to be a site steward for archaeology around the state. We will discuss the various types of archaeology someone might come across when out around the state. Also, a discussion of artifact collection, the doos and don'ts and best practices for being a steward.

Speakers:

- Casey Snider, Tread Lightly
- Shane Baker, Idaho Power Company
- Mindie Walkoviak, Respect and Protect Utah
- Shauna Robinson, Twin Falls County/BLM Steward

9:00 a.m. – 10:15 a.m.

**Museum Session: Reinventing Our Exhibits**

Idaho Statehouse, WW53, 700 W Jefferson Street

This session will bring together Museum leaders from across the state to join in a panel discussion of the reinvention of Idaho's museums. From the work occurring at the Monastery of St. Gertrude, The Museum of Natural History on the campus of Idaho State University, and the soon-to-be newest state historical museum in the Northwest, the Idaho State Museum, the discussion will range from the newest technology to the reimagining of artifact story telling. This session will offer attendees behind the scenes insight, inspiration and an opportunity to ask questions of our esteemed panel.

**Speakers:**

- Mary Schmidt, CEO of External Ministries, Historical Museum at St. Gertrude (Cottonwood)
- Dr. Leif Tapanila, Director, Idaho Museum of Natural History (Pocatello)
- Janet Gallimore, Executive Director, Idaho State Museum & Idaho State Historical Society (Boise)

9:00 a.m. – 10:15 a.m.

**Preservation Session: Tools for Rehabilitation**

Idaho Statehouse, WW54, 700 W Jefferson Street

Rehabilitation of historic buildings can seem daunting. Navigating the nuances of financing, permitting and local design review may make preservation or adaptive reuse seem too difficult to even attempt. Luckily, there is a wide array of tools available to make the rehabilitation of historic buildings worthwhile. From universally accepted design treatments to tax credits to grant funding, this session will explore the tools available to assist in the rehabilitation of historic structures. J. Todd Scott, Preservation Architect for King County, Washington, and past Community Development Director in Astoria, Oregon, will guide you through the opportunities and challenges of rehabilitating historic buildings, drawing on examples from his significant experience in the Northwest.

**Speaker:**

J. Todd Scott, Preservation Architect, AIA (King County, WA)

9:00 a.m. – 10:15 a.m.

**Main Street/CLG Session: The Importance of Survey and Inventory**

Idaho Statehouse, WW55, 700 W Jefferson Street

This session will discuss the tools and best practices for communities to



undertake comprehensive survey and inventory work, as well as address the preservation planning and economic benefits for communities and Main Street communities through resource documentation and public education. The presenters will illustrate how the retention and continued use of commercial, residential, industrial, and agricultural properties depends on their identification, documenting their historical role in the community's development, and understanding the current perception of how these

properties contribute to community character and identity. Certified local governments can learn how to successfully integrate historic preservation into local comprehensive planning priorities and see examples of tools employed in other communities for identifying and prioritizing survey areas. Main Streets will

learn about methods for identifying and the role of these and stories in heritage tourism marketing. Local historic societies and interested citizens will benefit from learning how to actively engage in preservation in the community through both search and field work.

**Speakers:**

- Spencer Howard (Boise)
- Katie Chase (Boise)

10:15 a.m. - 10:30 a.m.

**Idaho Statehouse, Dining Room**

Break Service

10:30 a.m. – 11:45 a.m.

**History Session: The CCC in Idaho**

Idaho Statehouse, WW02, 700 W Jefferson Street

Created in March 1933, the Civilian Conservation Corps (CCC) was the first and most far-reaching of the New Deal programs. It was a public works program intended to promote environmental conservation and build good citizens through vigorous disciplined outdoor labor. The CCC remains one of the few successful examples of how the United States has acted to mitigate the catastrophic effects of economic collapse while producing a legacy of public benefit. This session will use the results of extensive research and collection about the CCC in Idaho to examine the impact of the CCC as a successful public program on individuals, communities and economies in Idaho. The groundbreaking digital portal about the CCC in Idaho established online at the University of Idaho Library will be used to show the structural landscapes created by the CCC in Idaho and how scholars and public can use the portal.

**Speakers:**

- Ivar Nelson (Moscow)
- Patricia Hart, University of Idaho (Moscow)

10:30 a.m. – 11:45 a.m.

**Museum Session: Backlog of Museum Collections**

Idaho Statehouse, WW53, 700 W Jefferson Street

This panel will provide a starting point for small museum staff and volunteers for managing a backlog. We will discuss the importance of a strong collections policy, de-accession methods and implementation of policy, as well as real world examples of museum backlogs.

**Speakers:**

- Pat Roath

- Mary Thompson, Senior Collections Manager, ISU (Pocatello)
- Linda Morton-Keithley

10:30 a.m. – 11:45 a.m.

**Preservation Session: Making a Statement – The Benefits of a State Historic Tax Credit Program**

Idaho Statehouse, WW54, 700 W Jefferson Street

Join in this panel presentation and discussion regarding one of the most valuable preservation tools. Donovan Rypkema, historic preservation and economic development expert, will provide an overview of the Federal Historic Tax Credit (HTC) program and its impacts across the country over the past few decades, including sparking statewide Historic Tax Credit Programs. Kerry Davis will present the proposed Idaho HTC currently being drafted for consideration by the Governor and Idaho legislature. Kathryn Almberg will share her experience working on two HTC projects in Idaho – the Whitman Building (Pocatello) and the Bonneville Hotel (Idaho Falls). Sheri Freemuth will moderate a Q and A session and a discussion on how best to ensure success for a State HTC initiative.

**Speakers:**

- Don Rypkema, Principal, PlaceEconomics (Washington, DC)
- Kerry Davis, Principal, Preservation Solutions (Boise)
- Kathryn Almberg, Director, The Housing Company (Boise)
- Sheri Freemuth, Senior Field Officer, National Trust for Historic Preservation (Boise)

10:30 a.m. – 11:45 a.m.

**Main Street/CLG Session: Best Practices for Main Street**

Idaho Statehouse, WW55, 700 W Jefferson Street

This session will feature successful projects taking place in downtowns, historic places and Main Street communities.

**Speaker:**

Jerry Miller, Idaho Department of Commerce (Boise)



12:00 p.m. – 1:30 p.m.

**Lunch Plenary: The Impact of Preservation**

Hoff Building, Crystal Ballroom, 802 W Bannock St.

Join us for a catered luncheon in the Crystal Ballroom located in the historic Hoff Building, just a stone’s throw from the Idaho State Capitol.

Don Rypkema will bring his considerable expertise

in real estate and economic development, along with his experience in small and large communities across the country, to us in a compelling presentation. He will share examples of the positive impact historic preservation has made through nationwide programs such as Main Street and the Federal Historic Tax Credits, as well as local initiatives such as historic district designations. He will also offer observations on the changes in Idaho over the past several decades and the promise for the future.

**Speaker:** Don Rypkema (Washington, DC)

**Welcome:** Mayor Dave Bieter (Boise)

Thank you to the Idaho Humanities Council and the National Trust for Historic Preservation for sponsoring Don Rypkema's presentation.



1:45 p.m. – 3:00 p.m.

**Museum Session: Ask a Curator**

Idaho Statehouse, WW53, 700 W Jefferson Street

Geared towards Idaho's small museums, this session will provide a forum where you can ask about your collections' care, storage, and management problems. This session will also present cost-effective options and guidance to resources.

**Speakers:**

- Amanda Biemann, Curator of Collections & Exhibitions, The Basque Museum & Cultural Center (Boise)
- Layce Johnson, Processing Archivist, ISHS State Archives (Boise)
- Diana Dicus
- Michelle Wallace, Capital Curator, ISHS (Boise)

1:45 p.m. – 3:00 p.m.

**Preservation Session: Crafting an Effective Historic Preservation Plan**

Idaho Statehouse, WW54, 700 W Jefferson Street

Historic Preservation Commissions often feel like they're not exactly sure what they should be doing on an on-going basis. They are committed to historic preservation in their community, but can feel at a bit of a loss of how to actually do that. One of the best ways for an HPC to confront this difficulty is to have a Historic Preservation Plan. A well-crafted Historic Preservation Plan can help

an HPC focus their efforts, can raise the profile of the Commission in the community (and within the city/county government), and put the Commission in a better position for possible grant funds (and not just CLG Grant funds). But what if the Commission, or the city/county, doesn't have the funds to bring in a consultant to write the plan for them? This session will provide attendees with some guidance on how to craft an effective Historic Preservation Plan in-house and will help set up Commissions for success in the future.

**Speakers:** Pete L'Orange, Historic Preservation Planner, State Historic Preservation Office (Boise)

1:45 p.m. – 3:00 p.m.

### **Main Street/CLG Session: Mining Your Assets**

Idaho Statehouse, WW55, 700 W Jefferson Street



A successful mining operation involves many people of different skills, interests and personalities working together to realize the treasure. That approach proved equally successful for Wallace, Idaho's premier event Fall For History. Co-chairs Tammy Copelan of the Wallace District Mining Museum and Janet Feiler of the Wallace Chamber of Commerce will give tips on how to bring numerous organizations together, spark the

passion of volunteers, and market multiple days of diverse activities – all with a common goal of fostering a love and appreciation of history.

#### **Speakers:**

- Tammy Copelan, Wallace District Mining Museum (Wallace)
- Janet Feiler, Wallace Chamber of Commerce (Wallace)

3:15 p.m. – 4:30 p.m.

### **Closing Plenary – Fundraising**

Idaho Statehouse, WW02/Lincoln Auditorium, 700 W Jefferson Street

This session will feature a number of techniques and strategies for funding operating expenses, capital and other special projects.

#### **Speakers:**

Jerry Miller, Idaho Department of Commerce (Boise)

Tenna Wright, Idaho Public Television (Boise)

Ryan Gerulf, Idaho State Historical Society (Boise)  
SATURDAY, SEPTEMBER 23, 2017 – POST CONFERENCE EVENTS

9:00 a.m. – 12:00 p.m.

### **Training for Certified Local Governments**

The History Center, Board Room, 2205 Old Penitentiary Road

This session is specifically focused on providing training for Idaho's Certified Local Governments, and help CLG commission members meet their on-going training and education needs. This session will focus on complying with the Idaho Open Meetings Law, improving public engagement in preservation at the local level, new Federal NEPA reporting requirements for CLG projects, and revision to the state's CLG Grant program. Attendees are encouraged to bring specific questions on potential projects for possible grant funding as there will be time at the end of the session to discuss specific projects for the FY18 grant cycle.

**Speaker:** Pete L'Orange, Historic Preservation Planner, State Historic Preservation Office (Boise)

### **Idaho Archaeology Society Conference**

Idaho State Capitol Building, Lincoln Auditorium, 700 W Jefferson Street

This is the 44th Annual Conference. The conference features presentations and posters regarding current archaeological and historical research and investigations around Idaho and surrounding states.

Abstracts will be provided at the conference and available at the IAS website  
<http://www.idahoarchaeology.org/>

Introduction: Kirk Halford Vice President IAS

- 9:40            The Pre-Schooner II Crater: Plowshares Comes to Idaho  
                  David Valentine
  
- 10:00           Are there Pre-Clovis Mammoth Sites in Idaho?  
                  Dr. Lee Sappington, Associate Professor (University of Idaho)
  
- 10:20           Geoarchaeology of Northern Goshute Basin: Lake Waring Draw-  
                  Down Depositional Settings And Potential For Subsurface Cultural  
                  Deposits  
                  William Eckerle and Sasha Taddie (Western GeoArch Research)

- 10:40 "I Feel Like Taking their Heads Off": Children in Fort Boise, Idaho  
Nathan May (University of Idaho)
- 11:00 The Teton Basin Lime Kiln  
Jennifer Leonard and Verna Gonzales (Caribou-Targhee National Forest)
- 11:20 BREAK
- 11:40 Lava Hunting Tactics –Evidence of Native Americans Utilizing  
Previously Active Lava Flows in Craters of the Moon National Park  
Chase Young (Arkhaio Archaeology)
- 12:00 Bottles From the Looters Pit  
Lilian Bodley and Ray von Wandruszka (University of Idaho)
- 12:20 An Analysis of the Ophir Creek Site Glass Minimum Vessel Count  
(MVC)  
Cynthia Hannold (University of Idaho)
- 12:40 Hunter-gatherers of the Boise Foothills  
William "Jerry" Jerrems
- 1:00 The Narrative and Preliminary Testing Results of an Idaho  
Steamboat  
Landing Settlement  
Idah Whisenant (University of Idaho)
- 1:20 First Nations-First Foods with the Duck Valley Indian Reservation  
Combined School  
Susan Filkins (BLM)
- 1:40 Wrap-up and IAS Business Meeting

POSTERS:

Foodways on the Frontier West: A Case Study on the Cyrus Jacobs-Uberuaga Boarding House, Allison Fashing and Darcy Wayman (University of Idaho)



9:30 a.m. – 1:30 p.m.

**Capital City Public Market (enjoy at your leisure)**

8th Street downtown

The Capital City Public Market was established in 1994 as a place for local growers, producers, and artisans to uphold the age-old tradition of interacting directly with their customers. The Market has become an iconic part of downtown's Boise, attracting you and old from near and far.



10:00 a.m. – 11:30 a.m.

**Preservation Idaho's WalkAbout Boise**

Grove Street Downtown

Join Preservation Idaho for a special WalkAbout Boise with beloved local history hero Barbara Perry Bauer. A special tour for conference attendees is set to start at 10:00 a.m. The tour is approximately an hour and a half, walking through 150 years of history and architecture in

downtown Boise. Limit 25 participants.

**Speaker:** Barbara Perry Bauer

1:00 – 5:00 p.m.

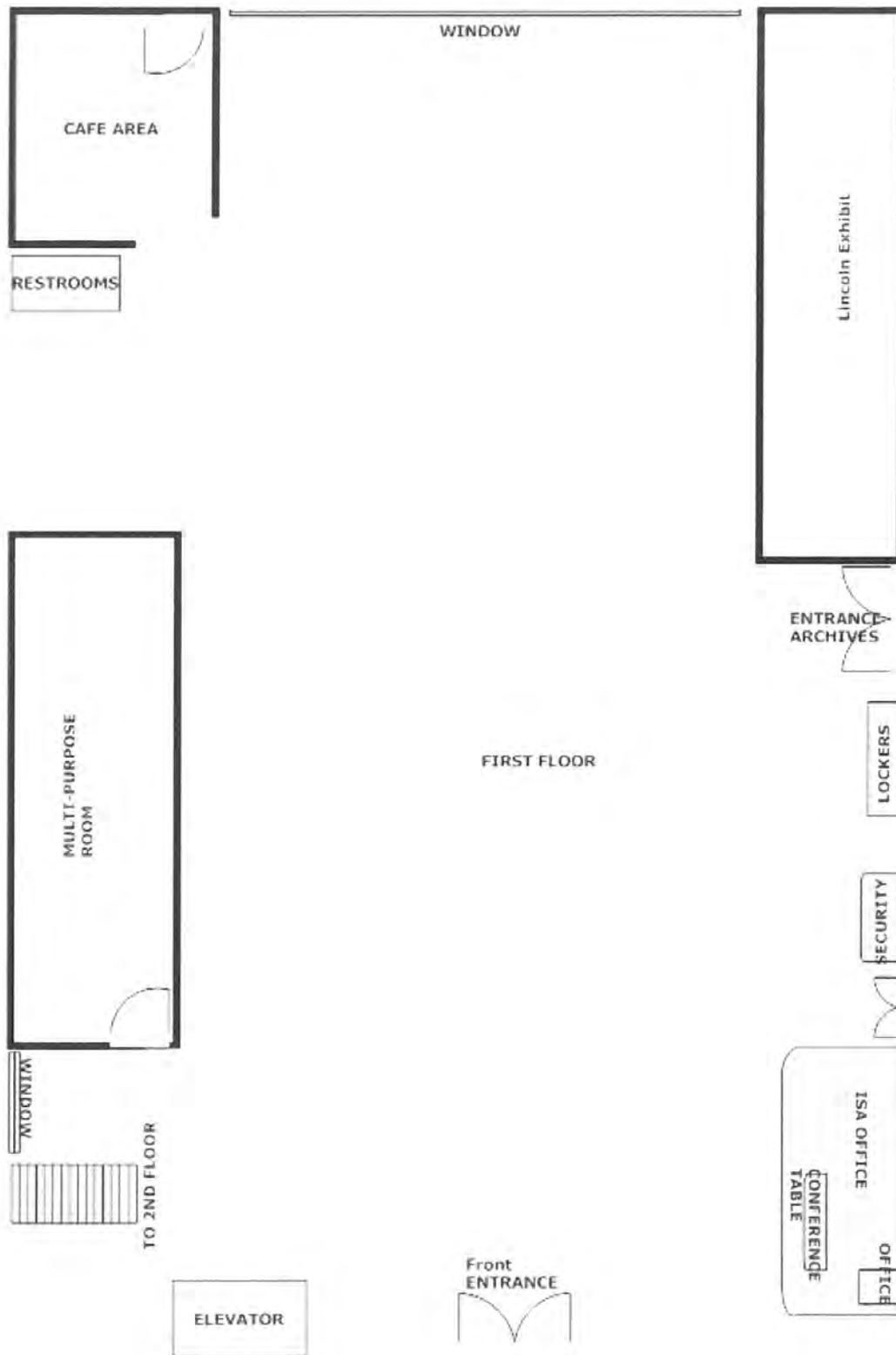
**Historic Sites Review Board (open public meeting)**

The History Center, Board Room, 2205 W Old Penitentiary Road

In fulfillment of the National Historic Preservation Act of 1966, the Board serves in an advisory role to the Idaho State Historic Preservation Office (SHPO). One of their key duties is to review and approve National Register of Historic Places nominations for accuracy and adequacy. At least one member must be professionally qualified in each of the following disciplines: architectural history, archaeology and history. The Idaho Historic Sites Review Board meets annually and the public is welcome to attend. Join us this year to see what significant historic properties Idaho will be recognizing.

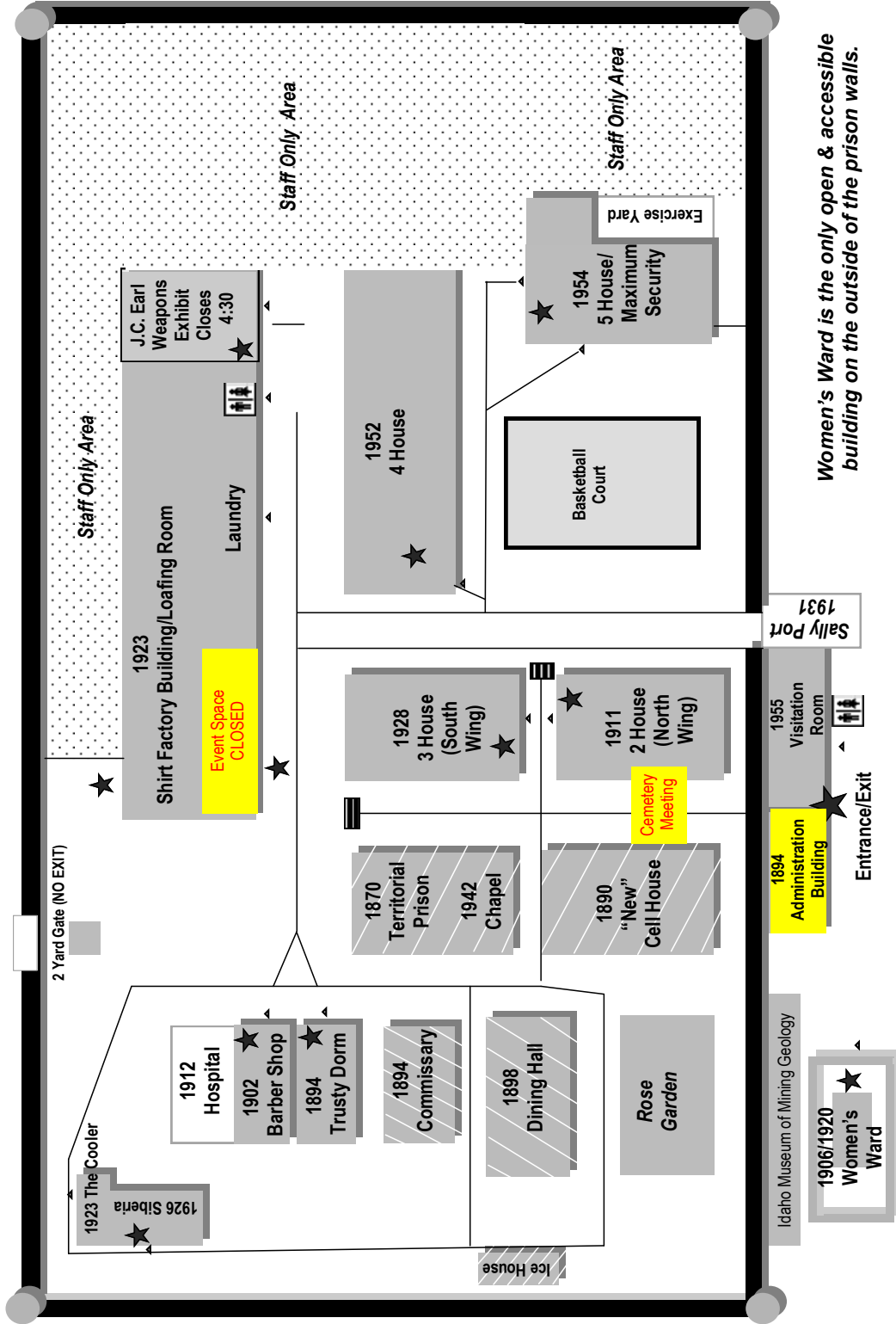
**Speakers:**

- Shauna Corry
- Nancy Renk
- Amy Canfield
- Caroline Carley
- Kerry Davis
- Christina Olson
- Sheri Robertson
- Laura Woodworth-Ney
- Jamee Fiore (moderator)



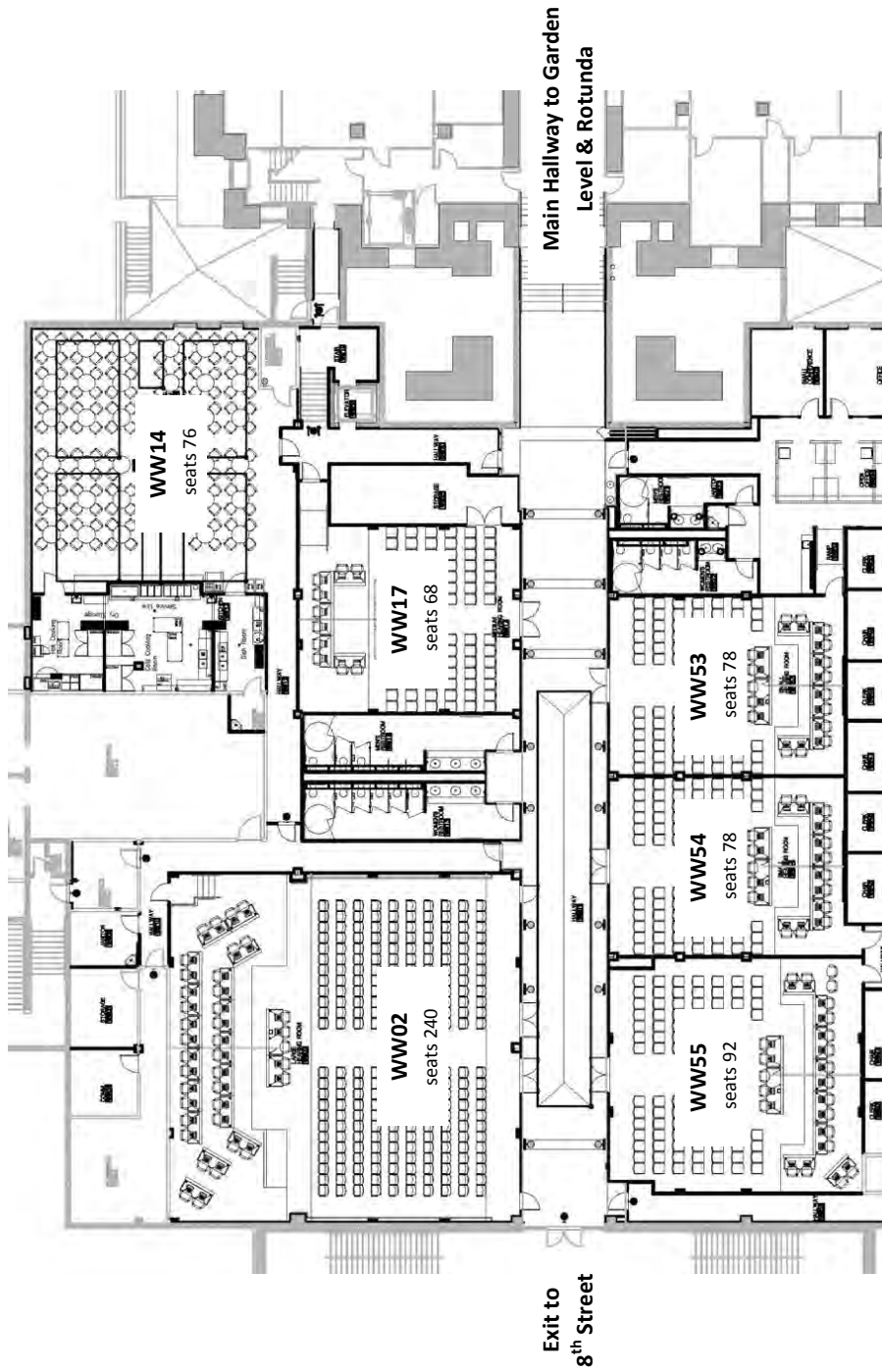
# Old Idaho Penitentiary State Historic Site

2445 Old Penitentiary Road, Boise, Idaho 83712 208-334-2844  
 www.history.idaho.gov Find Us on Social Media: "Old Idaho Penitentiary"



*Women's Ward is the only open & accessible building on the outside of the prison walls.*

**Idaho Statehouse: West Wing (Senate) Public Hearing Rooms Directory**

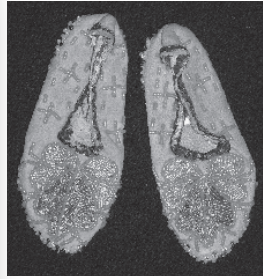


- WW02:** Lincoln Auditorium
- WW17:** Senate Flex Space
- WW53:** Agricultural Affairs, Local Government, Transportation
- WW54:** Commerce, Judiciary & Rules, Health & Welfare
- WW55:** State Affairs, Resources, Education
- WW14:** Dining Hall

# DOWNTOWN PUBLIC PARKING SYSTEM



- |   |                |   |                  |   |                 |
|---|----------------|---|------------------|---|-----------------|
| 1 | 9th & Main     | 4 | Capitol & Front  | ▶ | Entry Locations |
| 2 | Capitol & Main | 5 | 9th & Front      |   |                 |
| 3 | 10th & Front   | 6 | Capitol & Myrtle |   |                 |



# IDAHO HISTORIC PRESERVATION

## MUSEUM EXHIBITS



## HISTORIC SITES



## ARCHAEOLOGY

## EDUCATIONAL PROGRAMS



## ARCHIVES

Idaho State Museum  
Idaho State Archives | Records Center  
State Historic Preservation Office  
Historic Sites Program

[www.history.idaho.gov](http://www.history.idaho.gov)



(208) 334-2682

*The Idaho State Historical Society is an extraordinary system of cultural and historic resources. We seek to inspire, enrich and engage all Idahoans by leading the state in preserving, sharing, and using history and cultural resources relevant to today to inform and influence the future.*



## Public History

Department of History

Community outreach programs

Community partnerships

Civic engagement

BOISE  
STATE  
UNIVERSITY  
DEPARTMENT  
OF HISTORY

# YOUR PARTNER IN HISTORY & HERITAGE

*"Working with BSU's history department means access to great colleagues, passionate students, and eventually, successful employees!"*

Jennifer Stevens-  
Stevens Historical Research Associates

## Internships

Department of History

Established program

Interdisciplinary

Qualified & diverse candidates

*"I could not ask for a better group of people. Along with this, I have to say that the help of my fellow graduate students has been heaven-sent. I love my peers."*

Chelsee Boehm - MAHR 2017,  
Former Boise City Historian

## TALK TO US

Bob H. Reinhardt, Assistant Professor

(208) 426-1367

[bobreinhardt@boisestate.edu](mailto:bobreinhardt@boisestate.edu)

[history.boisestate.edu](http://history.boisestate.edu)

   @BSUHistory

## Master's Program

Department of History

Ongoing curricular development

Collegial atmosphere

Committed faculty

# TROUT ARCHITECTS

CHARTERED

- PRESERVATION
- RESTORATION
- REHABILITATION
- RECONSTRUCTION
- ADAPTIVE REUSE
- FACILITY STUDIES
- PROJECT PLANNING
- DOCUMENTATION

2504 W. KOOTENAI STREET  
BOISE, ID 83705  
208.344.8646



[www.troutarchitects.com](http://www.troutarchitects.com)



# Preserving the historic fabric of Idaho to be celebrated and enjoyed.



50/50 matching preservation grants

Archaeological testing & research

Conservator's Assistance with Antiquities

Grant Writing Assistance

Educational workshops in preservation practices

Architectural historian and conservation assistance

PO Box 140617 // Boise, ID 83714

208.549.1778 (o)

[iht@idahoheritage.org](mailto:iht@idahoheritage.org) // [www.idahoheritage.org](http://www.idahoheritage.org)

*Photo by Jan Boles*

FIND YOUR  
*Adventure*

PURCHASE YOUR \$10  
IDAHO STATE PARKS PASSPORT  
WHEN YOU RENEW YOUR  
AUTOMOBILE REGISTRATION.



IDAHOPARKSPASSPORT.COM



*Your key from the past to the future*



www.taghistory.com | 208-338-1014 

# Historic results.

CHANGE MAKERS SHAPING

BUSINESS, POLITICS, AND CULTURE

IN THE SPIRIT OF THE WEST.

## SERVICES

COMMUNICATIONS  
MARKETING AND ADVERTISING  
RESEARCH  
GOVERNMENT RELATIONS  
PUBLIC AFFAIRS

[STRATEGIES360.COM](http://STRATEGIES360.COM)

**S360**



The Bureau of Land Management's mission is to sustain the health, diversity, and productivity of America's public lands for the multiple use and enjoyment of present and future generations.

Today the BLM manages 245 million acres, mainly in the western U.S.

***Making connections between people,  
knowledge, and powerful ideas will  
build our story of Idaho's diverse  
heritage and expand our each together.***

***A special thank you to the committee that put in  
many hours to bring this event to you:***

Katherine Kirk, Idaho Heritage Trust

Sheri Freemuth, National Trust for Historic Preservation

Tricia Canaday, Idaho State Historical Society State Historic Preservation  
Office

Nancy Richardson, Idaho Department of Commerce Tourism

Jerry Miller, Idaho Department of Commerce Main Street

Neil Luther, Boise City Department of Arts and History

Paula Benson, Preservation Idaho

Amanda Biemann, Basque Museum & Cultural Center

Kirk Halford, Idaho Archaeological Society

Pete L'Orange, Idaho State Historical Society State Historic Preservation  
Office

Jamee Fiore, Idaho State Historical Society State Historic Preservation Office

Matt Halitsky, Idaho State Historical Society State Historic Preservation Office

“The activity that is the subject of this publication has been funded (in part/entirely) with Federal funds from the National Park Service, Department of the Interior administered by the Idaho State Historical Society. However, the contents and opinions do not necessarily reflect the views or policy of the Department of the Interior nor does the mention of trade names or commercial products constitute endorsement or recommendation by the Department of the Interior.”



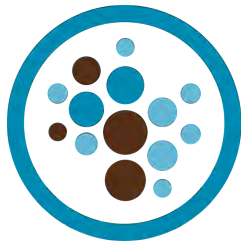


**Planning a conference, event, tour or activity in the region?**

**Put the experience of the team at Framework Meetings and Destinations to work for you!**

Our staff offers professional planning assistance for all types of programs and events. From meeting and convention planning, to full-service destination management services, save your time and money by partnering with Framework Meetings and Destinations on your program.

We can assist you with a wide variety of elements – including but not limited to program planning, financial management, online registration, mobile app design/management, tours/activity creation and coordination, transportation services, food/beverage design, speaker coordination, audio visual and production services. Even site selection and contract negotiation for where and when to hold your event is available, making your role in the program much more enjoyable!



**Framework**  
Meetings and Destinations



Framework Meetings is pleased to be an Event Level Sponsor of the 2017 Idaho Heritage Conference!

The team at Framework Meetings sends our appreciation to the planning committee of IHC 2017. Congratulations on a great conference, and thank you again for selecting us as your conference planning partners!

[www.frameworkmeetings.com](http://www.frameworkmeetings.com)

